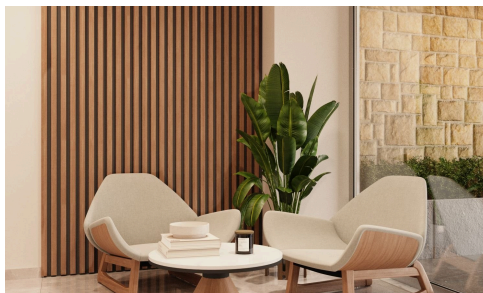
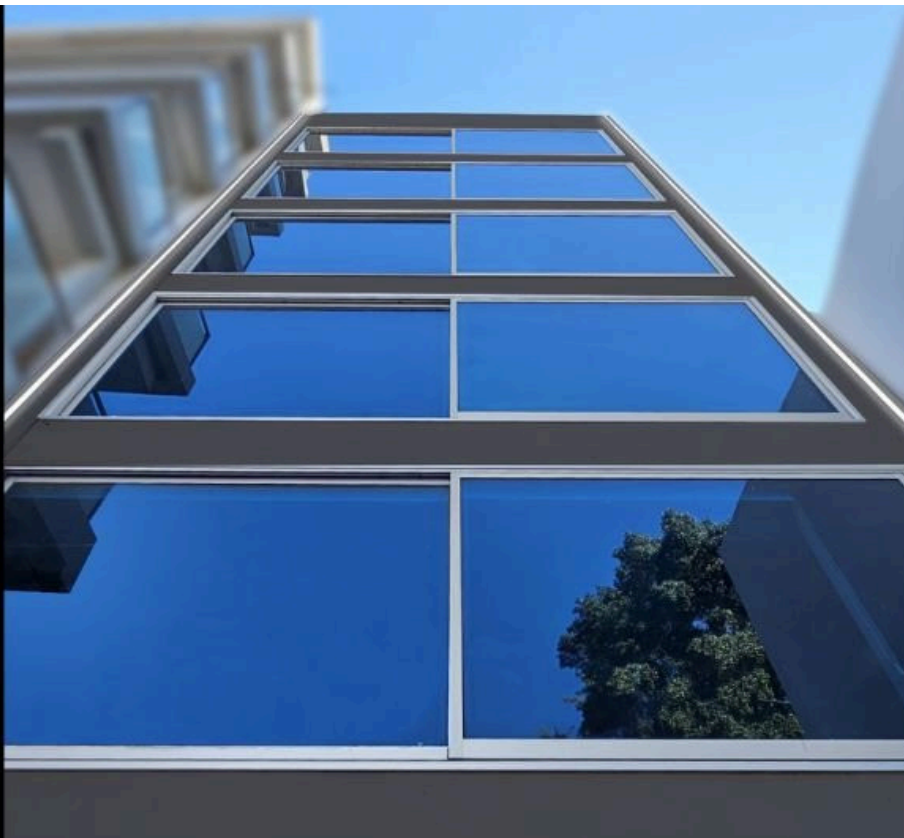


#1232



Whole Office Building Historical City Center Limassol €17,500 +VAT /month

 Historical Center, Limassol

Located right in the center of Limassol, just moments from Pentadromos, this six-story office building offers the perfect mix of style, space, and location. With 620 sqm of gross internal area, and 122 sqm of verandas and rooftop garden, it's designed to support teams of up to 58 people with ease and comfort.

Fully renovated to a high standard, the building features a clean, modern design and premium amenities. Highlights include a beautiful rooftop garden, a ground-floor patio, a dedicated conference room, two (2) director's rooms, a


Covered

 600 m²

Energy efficiency rating



Property Partner

 (+357) 99787327

 info@propertypartner.cy

