

#1091



Office 165 sqm Historical Centre Limassol

€4,850 +VAT /month

 Historical Center, Limassol

Eden Beach - Office 8B

A modern, well-designed office space suited to a variety of business needs.

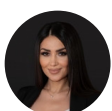
The layout can comfortably accommodate 12 to 24 individuals, depending on configuration, making it suitable for both growing teams and more established setups.

The ground floor offers a spacious open-plan area, with the flexibility to create up to two enclosed rooms for

Covered

 165 m²

Energy efficiency rating



Despina Tetrantze

 (+357) 94328890

 despina@propertypartner.cy

